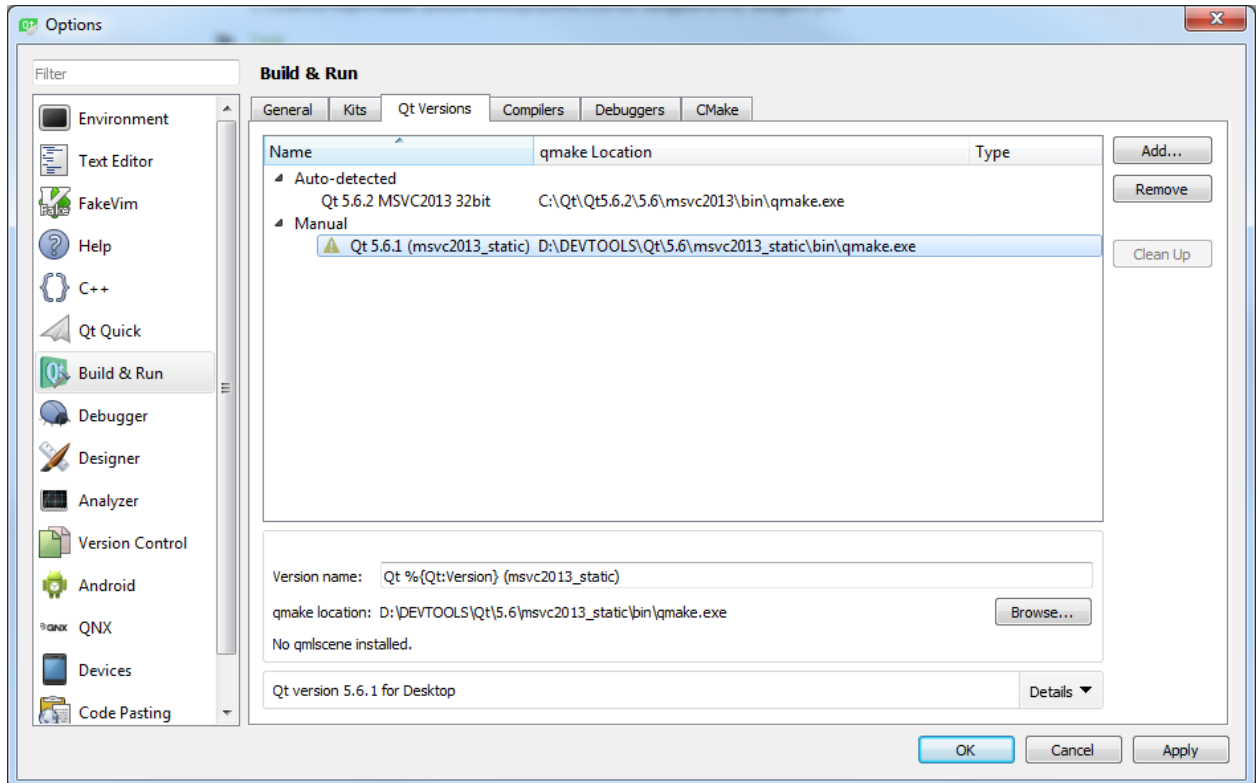
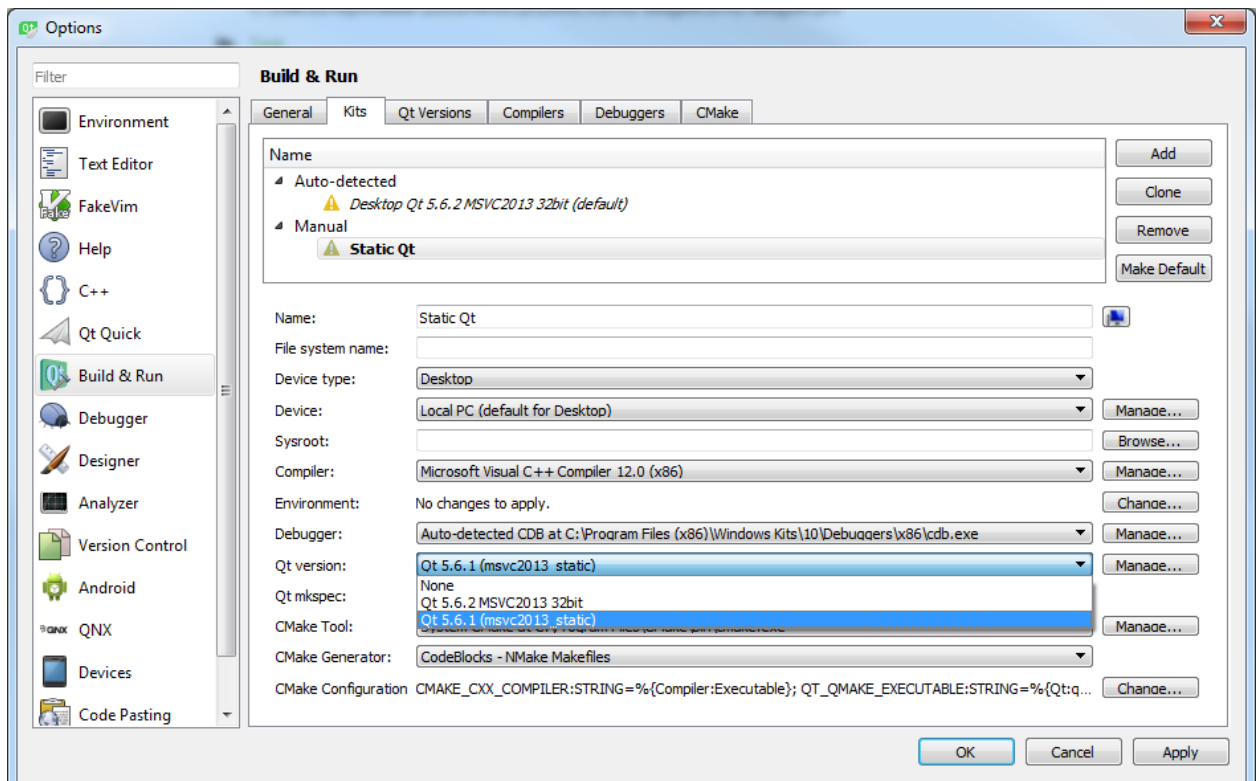


How to re-build installer with new version of Qt

1. Add new statically linked version of Qt in your 'Qt creator':
 - 1.1 Open 'Qt Creator', go to 'Tools -> Options -> Build & Run';
 - 1.2 Select tab 'Qt versions', press 'Add', select qmake utility of statically linked Qt;



- 1.3 Go to tab 'Kits', press 'Add', select just added static Qt version in the field 'Qt version';

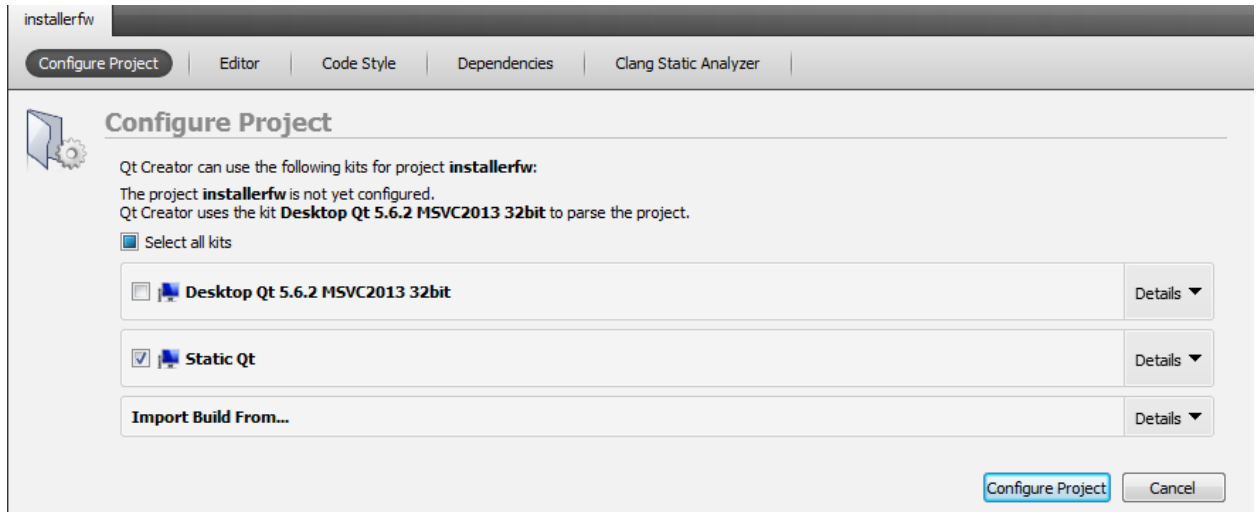


1.4 Press 'Apply' to save configuration.

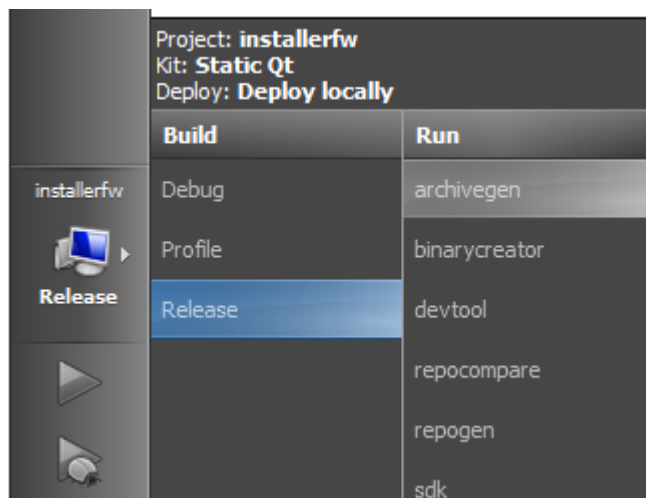
2. Build installer framework:

2.1 Open '.pro' file of the installer framework using Qt Creator (located in folder 'qtifw-LaCie/installerfw.pro');

2.2 Configure the project with statically linked Qt;



2.3 Select build type 'Release';



2.4 Press 'Build project';

2.5 When the project is successfully built, new folder 'build-installerfw-%Qt_version_name%-Release' appears near the installer framework directory. This folder contains installer framework compiled with selected Qt version.

3. Prepare application files for the installer and specify configs for the target platform:

3.1 Choose application binaries which you want to pack into the installer (LRM application folder for Windows **or** LRM .app bundle for Mac). Compress all files to the .7z archive with name 'data.7z';

3.2 Put 'data.7z' archive into folder 'Installer/packages/com.lacie/data';

- 3.3 Go to folder 'Installer/config', rename one of the files 'config_**win**.xml' or 'config_**mac**.xml' to just '**config.xml**' (based on the target platform for the installer – Windows or Mac);
- 3.4 Go to folder 'Installer/packages/com.lacie/meta', rename one of the files 'config_**win**.xml' or 'config_**mac**.xml' to just '**config.xml**' (based on the target platform for the installer).
4. Since all preparations have been done, build new installer:
- 4.1 On **Windows**: open 'cmd', execute following command:
- ```
cd %Path_to_installer_framework_folder%\bin && binarycreator.exe --offline-only -v -c
"%Path_to_folder_with_installer_configs%\config\config.xml" -p
"%Path_to_folder_with_installer_configs%\packages"
%Path_to_output_folder%:\LaCieRaidManager.exe
```
- Example of the command:
- ```
cd C:\Users\User1\Documents\build-installerfw-Static_Qt-Release\bin &&  
binarycreator.exe --offline-only -v -c  
"C:\Users\User1\Documents\Installer\config\config.xml" -p  
"C:\Users\User1\Documents\Installer\packages" C:\LaCieRaidManager.exe
```
- 4.2 On **Mac**: open 'terminal', execute following command:
- ```
%Path_to_installer_framework_folder%/bin/binarycreator --offline-only -v -c
"%Path_to_folder_with_installer_configs%/config/config.xml" -p
"%Path_to_folder_with_installer_configs%/packages"
%Path_to_output_folder%:/LaCieRaidManager.dmg
```
- Example of the command:
- ```
/Users/admin/Documents/build-installerfw-Static_Qt-Release/bin/binarycreator.exe --  
offline-only -v -c "/Users/admin/Documents/Installer/config/config.xml" -p  
"/Users/admin/Documents/Installer/packages"  
/Users/admin/Documents/LaCieRaidManager.dmg
```
5. Installer is ready to use!